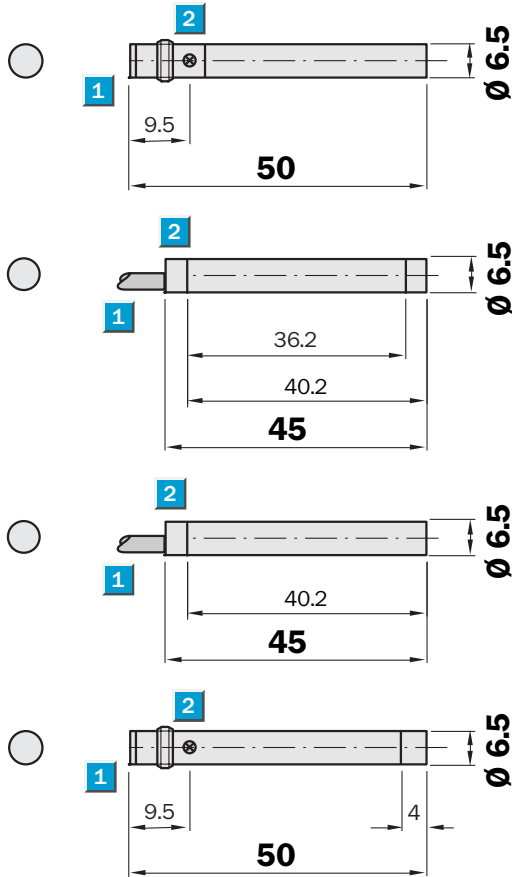


**Sensing range**  
2 / 4 mm

Inductive sensor

- Enhanced sensing range
- High switching frequency
- Short-circuit protection (pulsed)
- Solid stainless steel housing
- Enclosure rating IP 67

Dimensional drawing



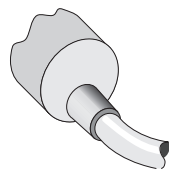
- 1 Connection
- 2 Display LED



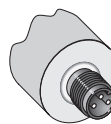
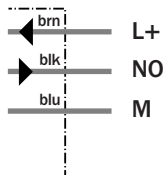
See chapter Accessories  
Connector, M8, 3-pin  
Mounting systems

Connection type

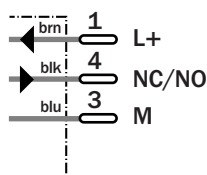
IH06-02BNS-VW1	IH06-02BNS-VT1
IH06-02BPS-VW1	IH06-02BPO-VT1
IH06-04NNS-VW1	IH06-02BPS-VT1
IH06-04NPS-VW1	IH06-04NPS-VT1



3 x 0.14 mm<sup>2</sup>



M8, 3-pin



Technical specifications		IH06-	02BNS -VW1	02BPS -VW1	02BNS -VT1	02BPO -VT1	02BPS -VT1	04NNS -VW1	04NPS -VW1	04NPS -VT1		
<b>Sensing range <math>S_n</math></b>	2 mm											
	4 mm											
<b>Electrical configuration</b>	DC 3-wire											
<b>Supply voltage <math>V_s</math></b>	DC 10 ... 30 V											
Ripple $U_{pp}$	$\leq 10\%$ <sup>1)</sup>											
Voltage drop $U_d$	$\leq 1.2 V$ <sup>2)</sup>											
Power consumption	$\leq 20 mA$ <sup>3)</sup>											
<b>Continuous current <math>I_a</math></b>	$\leq 200 mA$											
Time delay before availability $t_v$	$\leq 100 ms$											
Hysteresis H, of $s_r$	2 ... 15 %											
Repeatability R	$\leq 5\%$ ( $U_b$ and $T_a$ constant) <sup>4)</sup>											
Temperature drift, of $s_r$	$\pm 10\%$											
EMC	According to EN 60947-5-2											
<b>Switching output</b>	NPN											
	PNP											
<b>Output function</b>	Normally open											
	Normally closed											
<b>Installation</b>	Flush <sup>5)</sup>											
	Non-flush											
<b>Connection type</b>	Cable, PVC, 2 m											
	Connector, M8, 3-pin											
<b>Enclosure rating</b>	IP 67 <sup>6)</sup>											
Max. switching frequency	3,000 Hz											
	1,800 Hz											
Sleeve diameter	6.5 mm											
<b>Short-circuit protection</b>	✓ <sup>7)</sup>											
<b>Reverse polarity protection</b>	✓											
<b>Power-up pulse suppression</b>	✓											
Shock/vibration stress	30 g, 11 ms/10 ... 55 Hz, 1 mm											
Ambient temperature $T_a$	-25 °C ... +70 °C											
<b>Housing material</b>	Stainless steel, plastic											

<sup>1)</sup> of  $U_b$   
<sup>2)</sup> at  $I_a$  max

<sup>3)</sup> without load  
<sup>4)</sup> of  $s_r$

<sup>5)</sup> see installation notes  
<sup>6)</sup> according to EN 60529

<sup>7)</sup> (pulsed)

#### Order information

Type	Order no.
IH06-02BNS-VW1	7 900 178
IH06-02BPS-VW1	7 900 177
IH06-02BNS-VT1	7 900 180
IH06-02BPO-VT1	1 016 857
IH06-02BPS-VT1	7 900 179
IH06-04NNS-VW1	7 900 182
IH06-04NPS-VW1	7 900 181
IH06-04NPS-VT1	7 900 183